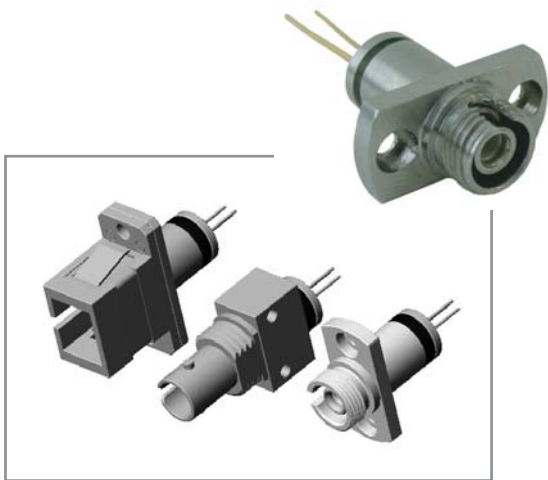




Receptacle Laser Diode Modules



www.princetel.com

Princetel, Inc.
4 Princess Rd Ste 209
Lawrenceville, NJ08648
609.895.9890
fax 609.895.9552
info@princetel.com



Receptacle Laser Diode Modules

Description

Receptacle laser diode modules are very convenient for implementing into systems and instruments. Princetel's receptacle laser modules are designed to be universally suitable for a variety of fibers (such as single mode, multimode, or PM fiber). These modules feature good coupling efficiency, outstanding stability, and long-term reliability. All three major type of receptacles, i.e. FC, SC, and ST, are available with the choice of wavelength ranging from 635 nm to 1650 nm.

Specification

Wavelength	635-1650 nm (see code for more choices)
Coupling efficiency (SM fiber)	>10% (30% typical)
Coupling efficiency (MM fiber)	>50% (>70% typical)
Operating temperature	0 to 40 C
Storage temperature	-20 to 60 C

We are the only company that can accept 9 mm diodes in FC receptacle packages.

www.princetel.com

Princetel, Inc.
4 Princess Rd Ste 209
Lawrenceville, NJ 08648
609.895.9890
fax 609.895.9552
info@princetel.com



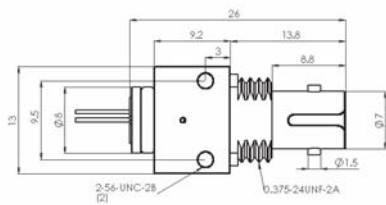
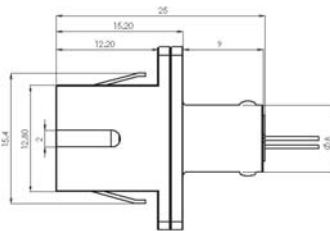
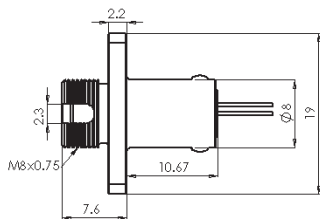
Receptacle Laser Diode Modules

Physical Properties

Package type	FC, SC, or ST
Package Material	Stainless steel
Sleeve material	Zirconia
Fiber type (for optimization)	Singlemode, PM, multimode, or plastic
Dimensions	See drawings
Weight	<15 g
Diode package type	5.6 mm TO CANs with hermetic seal*

* 9 mm TO package can only be used with FC type receptacle.

Mechanical



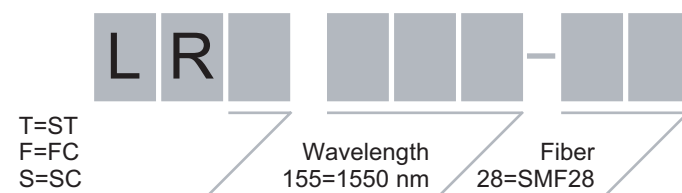
www.princetel.com

Princetel, Inc.
4 Princess Rd Ste 209
Lawrenceville, NJ 08648
609.895.9890
fax 609.895.9552
info@princetel.com



Receptacle Laser Diode Modules

Part Number



Wavelength and Fiber Code

Wavelength	Fiber
165=1625 nm	28=Corning SMF28 (1290=1650 nm)
162=1625 nm	13=Fujikura SM13 PANDA fiber
159=1590 nm	15=Fujikura SM15 PANDA fiber
155=1550 nm	56=3M FS-SC5624 (980 nm)
153=1530 nm	42=3M FS-SN4224 (850 nm)
148=1480 nm	32=3M FS-SN3224 (635 nm)
131=1310 nm	50=50/125 multimode
980=980 nm	62=62.5/125 multimode
850=950 nm	10=100/140 multimode
780=780 nm	20=200/240 multimode
670=670 nm	40=400/425 multimode
650=650 nm	60=600/630 multimode
635=635 nm	01=1000 um Mitsubishi plastic

www.princetel.com

Princetel, Inc.
 4 Princess Rd Ste 209
 Lawrenceville, NJ 08648
 609.895.9890
 fax 609.895.9552
 info@princetel.com