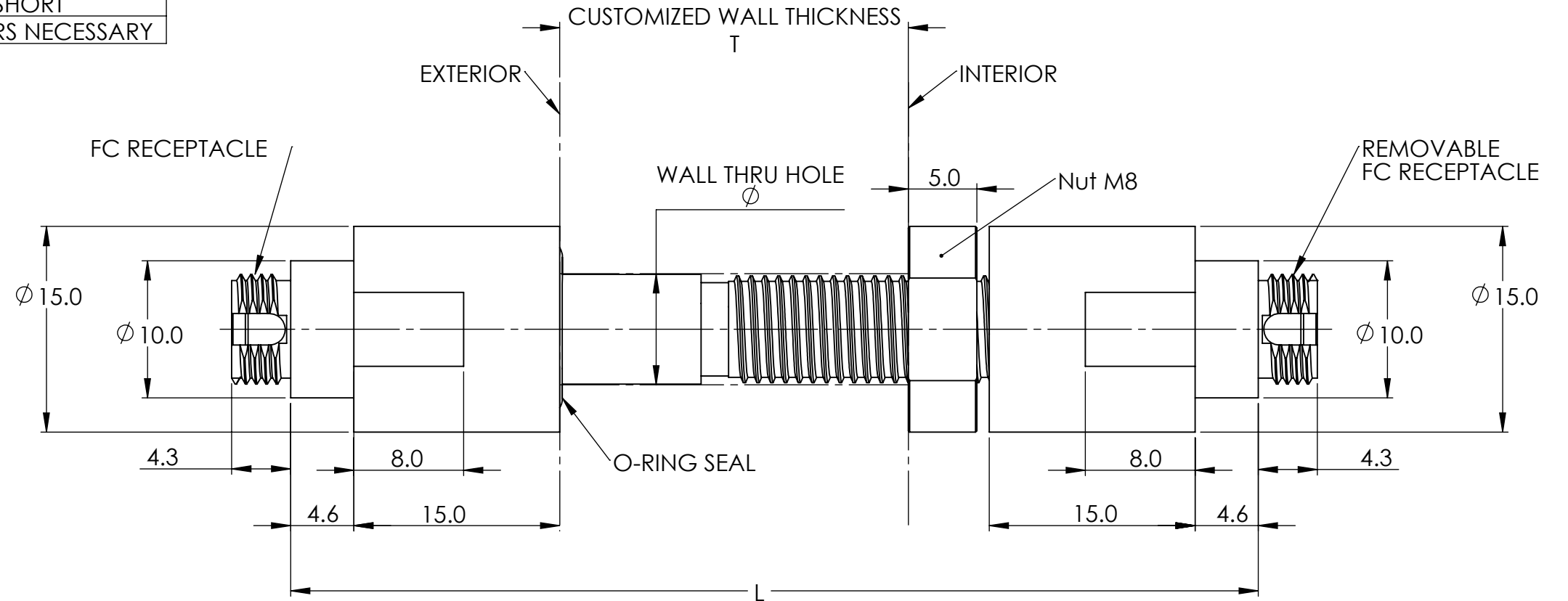
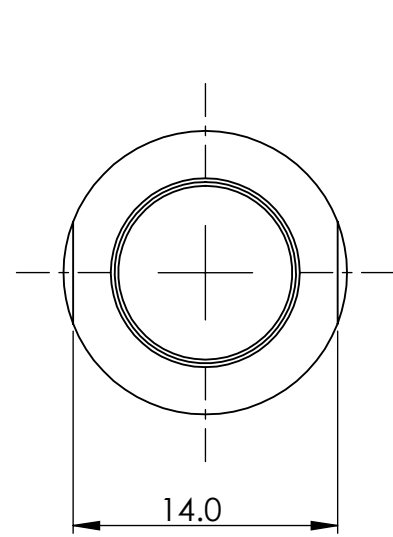


MODEL #	T (mm)	L (mm)	Φ (mm)	REMARK
FFFC	12~25.4	70.5	>= 8.1	STANDARD
FFFC50	41~53	99.2	>= 8.1	LONG
FFFC12	1~15	61.2	>= 8.1	SHORT
FFFC10	4.5~10	70.5	>= 12.8	ADAPTERS NECESSARY

REVISIONS				
REV.	ZONE	DESCRIPTION	DATE	APP.
1		CLARIFY THE WALL THICKNESS	12/2/22	L.X.
		ADD TIGHTENING TORQUE TO SPEC	5/22/23	L.X.

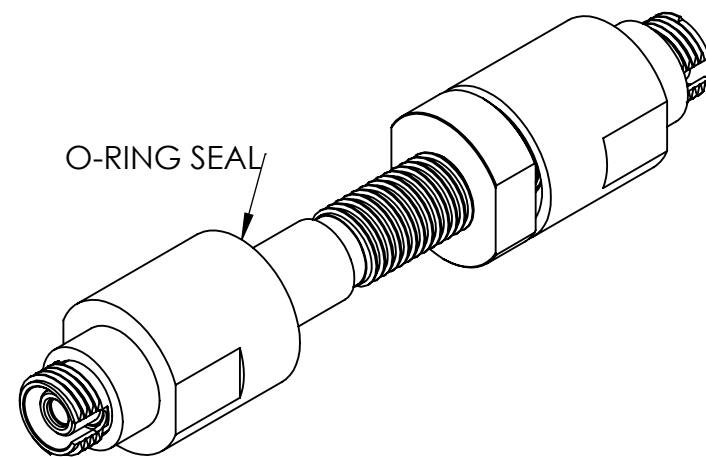


NOTE:

1. PART NUMBER CREATE :

MODEL # - WAVELENGTH CODE - FIBER TYPE - PSI  
 FFFC(##) - ### - ## - ##k

2. ALL CODE REFERENCE PLEASE SEE PRINCETEL FORJ SELECTION GUIDE.



ISOMETRIC VIEW

PROPRIETARY AND CONFIDENTIAL  
 THE INFORMATION CONTAINED IN THIS DRAWING IS THE SOLE PROPERTY OF PRINCETEL, INC. ANY REPRODUCTION IN PART OR AS A WHOLE WITHOUT THE WRITTEN PERMISSION OF PRINCETEL, INC. IS PROHIBITED.

**STANDARD SPECIFICATIONS**

PARAMETERS	VALUES
WAVELENGTH RANGE	650-1650 nm
INSERTION LOSS	<1 DB
RETURN LOSS (SM)	>30 DB (TYPICAL: 40 DB; DEPENDENT ON FLUID TYPE)
OPTICAL POWER HANDLING	23 DBM
WORKING TEMPERATURE	-40 TO 85 C
STORAGE TEMPERATURE	-50 TO 85 C
PACKAGE STYLE	FC RECEPTACLE
HOUSING MATERIAL	STAINLESS STEEL 303
FIBER TYPES	SINGLE OR MULTIMODE
SHAFT DIAMETER	8.0 mm
TIGHTENING TORQUE	2Nm max.
DESIGNED WALL THICKNESS	1~53 mm (FFFC10: ADAPTERS NECESSARY)
PRESSURE RATING	690 BAR (10,000 PSI) OR 69 BAR (1,000 PSI AND VACUUM)

UNLESS OTHERWISE SPECIFIED:

DIMENSIONS ARE IN mm  
 DO NOT SCALE DRAWING

TOLERANCES:  
 ANGULAR: ± 1/2°  
 ONE PLACE DECIMAL ± 0.100  
 TWO PLACE DECIMAL ± 0.050  
 THREE PLACE DECIMAL ± 0.025

MATERIAL:

DATE		NAME		PRINCETEL, INC.	
DRAWN	4/12/2021	L. X.		TITLE:	
CHECKED	4/12/2021	B. Z.		FC FEED THROUGH	
ENG APPR.				SIZE	DWG. NO.
MFG APPR.				B	FFFC-AD
Q.A.				REV	1
COMMENTS: FIRST ANGLE PROJECTION				PART NO. SEE NOTE 1	
				SHEET 1 OF 1	

