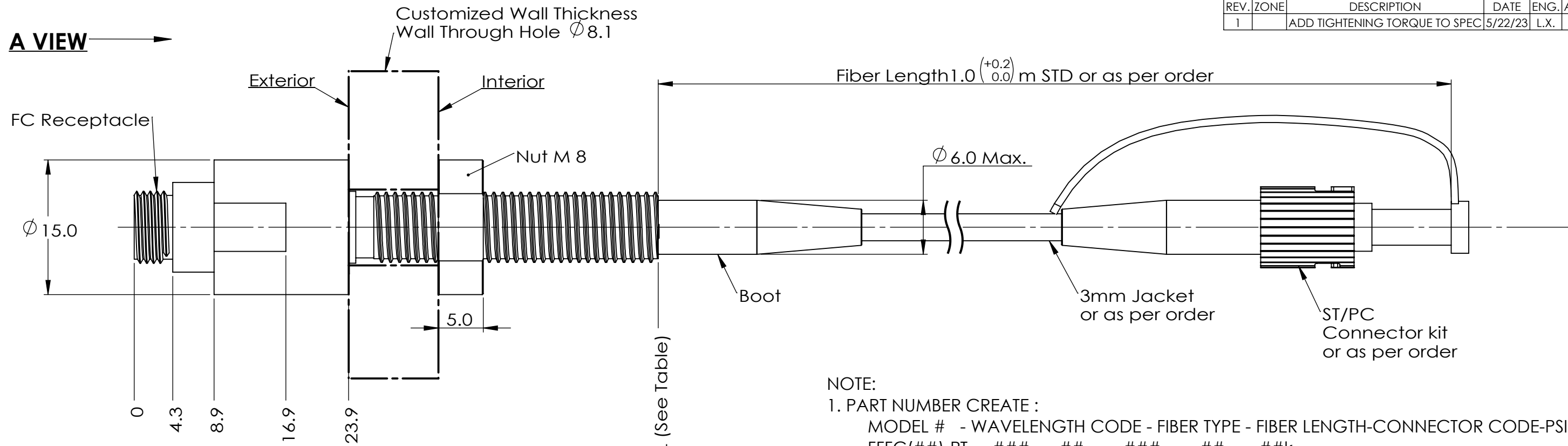


REVISIONS				
REV.	ZONE	DESCRIPTION	DATE	ENG. APP.
1		ADD TIGHTENING TORQUE TO SPEC	5/22/23	L.X. B.Z.



NOTE:
 1. PART NUMBER CREATE :
 MODEL # - WAVELENGTH CODE - FIBER TYPE - FIBER LENGTH-CONNECTOR CODE-PSI
 FFFC(##)-PT - ### - ## - ### - ## - ##k
 2. ALL CODE REFERENCE PLEASE SEE PRINCETEL FORJ SELECTION GUIDE.

STANDARD SPECIFICATIONS	
PARAMETERS	VALUES
WAVELENGTH RANGE	650~1650 nm (DEPENDENT ON FIBER TYPE)
INSERTION LOSS	<1 DB
RETURN LOSS (SM)	>30 DB (TYPICAL: 40 DB; DEPENDENT ON FLUID TYPE)
OPTICAL POWER HANDLING	23 DBM
WORKING TEMPERATURE	-40 TO 85 C
STORAGE TEMPERATURE	-50 TO 85 C
PACKAGE STYLE	FC RECEPTACLE/PIGTAILED HYBRID
FIBER TYPES	SINGLE OR MULTIMODE
JACKET TYPES	900um, 2mm, 3mm (KEVLAR/PVC)
PIGTAIL CONNECTOR TYPES	ST, FC, SC, LC (PC AND APC)
SHAFT DIAMETER	8.0 mm
TIGHTENING TORQUE	2Nm max.
HOUSING MATERIAL	STAINLESS STEEL 303
PRESSURE RATING	690 BAR (10K PSI) OR 69 BAR (1K PSI AND VACUUM)

UNLESS OTHERWISE SPECIFIED:
 DIMENSIONS ARE IN mm
 DO NOT SCALE DRAWING

TOLERANCES:
 ANGULAR: ± 1/2°
 ONE PLACE DECIMAL ± 0.100
 TWO PLACE DECIMAL ± 0.050
 THREE PLACE DECIMAL ± 0.025

MATERIAL:

DRAWN	3/24/2023	L. X.	PRINCETEL, INC. TITLE: FC FEED THROUGH PIGTAILED HYBRID
CHECKED	3/29/2023	B. Z.	
ENG APPR.			
MFG APPR.			
Q.A.			

COMMENTS: FIRST ANGLE PROJECTION

SIZE	DWG. NO.	REV
B	FFFC-PT-AD	1
PART NO.	SEE NOTE	
SHEET 1 OF 1		

MODEL #	L (mm)	WALL THICKNESS (mm)	REMARK
FFFC12-PT	58.4	1 ~ 28	SHORT
FFFC-PT	67.7	12 ~ 36	STANDARD
FFFC50-PT	96.4	41 ~ 65	LONG

PROPRIETARY AND CONFIDENTIAL
 THE INFORMATION CONTAINED IN THIS DRAWING IS THE SOLE PROPERTY OF PRINCETEL, INC. ANY REPRODUCTION IN PART OR AS A WHOLE WITHOUT THE WRITTEN PERMISSION OF PRINCETEL, INC. IS PROHIBITED.

