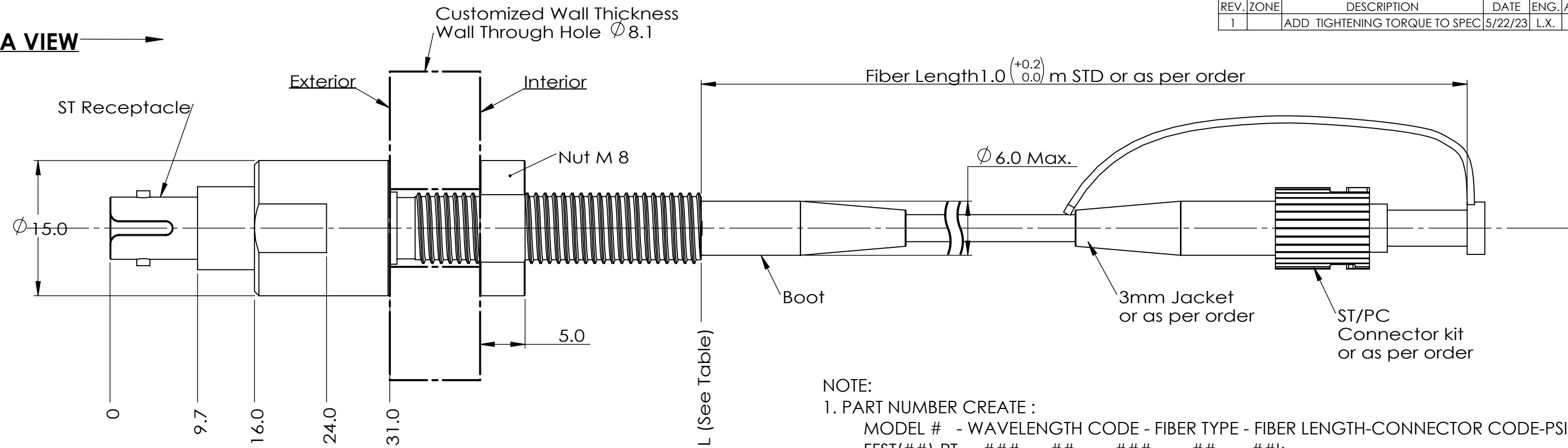


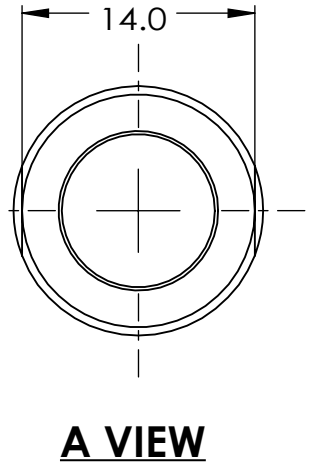
REVISIONS				
REV.	ZONE	DESCRIPTION	DATE	APP.
1		ADD TIGHTENING TORQUE TO SPEC	5/22/23	L.X. B.Z.

A VIEW →

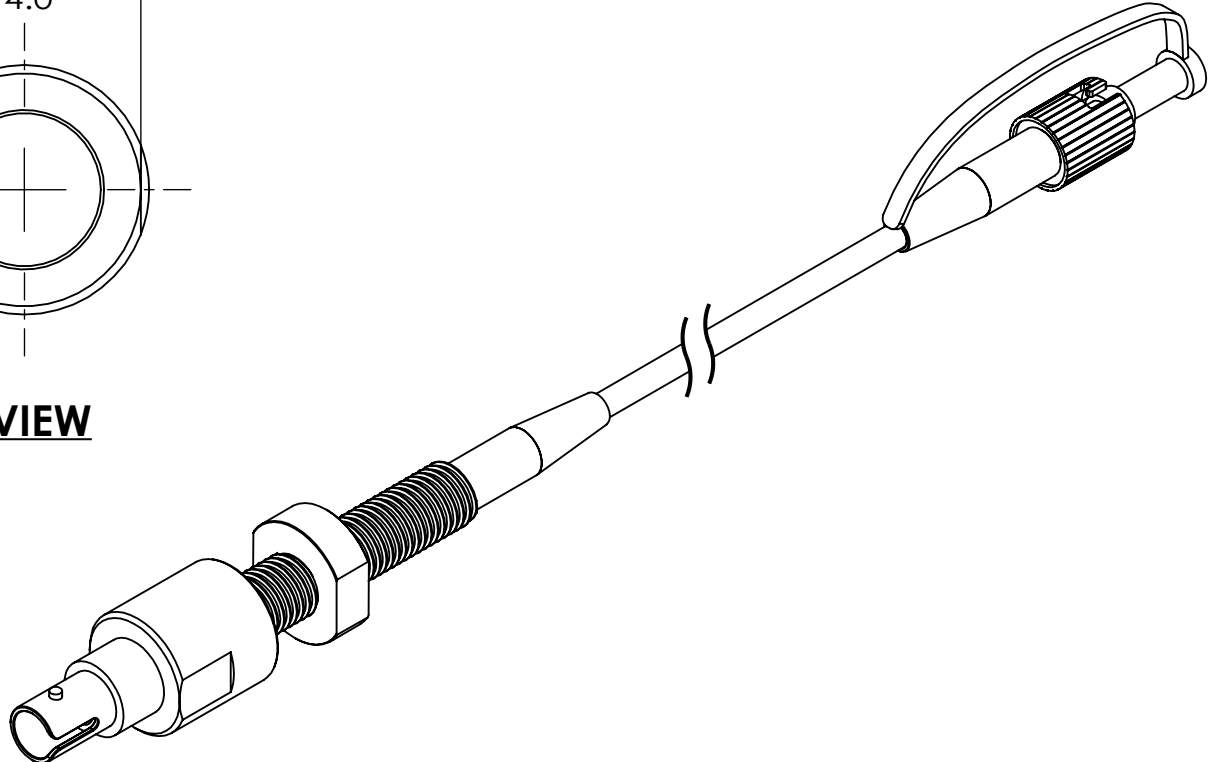


NOTE:
 1. PART NUMBER CREATE :
 MODEL # - WAVELENGTH CODE - FIBER TYPE - FIBER LENGTH-CONNECTOR CODE-PSI
 FFST(##)-PT - ### - ## - ### - ## - ##k
 2. ALL CODE REFERENCE PLEASE SEE PRINCETEL FORJ SELECTION GUIDE.

STANDARD SPECIFICATIONS	
PARAMETERS	VALUES
WAVELENGTH RANGE	650~1650 nm (DEPENDENT ON FIBER TYPE)
INSERTION LOSS	<1 DB
RETURN LOSS (SM)	>30 DB (TYPICAL: 40 DB; DEPENDENT ON FLUID TYPE)
OPTICAL POWER HANDLING	23 DBM
WORKING TEMPERATURE	-40 TO 85 C
STORAGE TEMPERATURE	-50 TO 85 C
PACKAGE STYLE	ST RECEPTACLE/PIGTAILED HYBRID
FIBER TYPES	SINGLE OR MULTIMODE
JACKET TYPES	900um, 2mm, 3mm (KEVLAR/PVC)
PIGTAIL CONNECTOR TYPES	ST, FC, SC, LC (PC AND APC)
SHAFT DIAMETER	8.0 mm
TIGHTENING TORQUE	2Nm max.
HOUSING MATERIAL	STAINLESS STEEL 303
PRESSURE RATING	690 BAR (10K PSI) OR 69 BAR (1K PSI AND VACUUM)



A VIEW



MODEL #	L (mm)	WALL THICKNESS (mm)	REMARK
FFST12-PT	65.5	1 ~ 28	SHORT
FFST-PT	74.8	12 ~ 36	STANDARD
FFST50-PT	103.5	41 ~ 65	LONG

PROPRIETARY AND CONFIDENTIAL
 THE INFORMATION CONTAINED IN THIS DRAWING IS THE SOLE PROPERTY OF PRINCETEL, INC. ANY REPRODUCTION IN PART OR AS A WHOLE WITHOUT THE WRITTEN PERMISSION OF PRINCETEL, INC. IS PROHIBITED.

UNLESS OTHERWISE SPECIFIED:
 DIMENSIONS ARE IN mm
 DO NOT SCALE DRAWING

TOLERANCES:
 ANGULAR: ± 1/2°
 ONE PLACE DECIMAL ± 0.100
 TWO PLACE DECIMAL ± 0.050
 THREE PLACE DECIMAL ± 0.025

MATERIAL:

DATE	NAME	PRINCETEL, INC. TITLE: ST FEED THROUGH PIGTAILED HYBRID
DRAWN 3/24/2023	L. X.	
CHECKED 3/28/2023	B. Z.	
ENG APPR.		
MFG APPR.		
Q.A.		
COMMENTS: FIRST ANGLE PROJECTION	SIZE	DWG. NO.
	B	FFST-PT-AD
	PART NO.	REV
	<i>SEE NOTE</i>	1
		SHEET 1 OF 1

