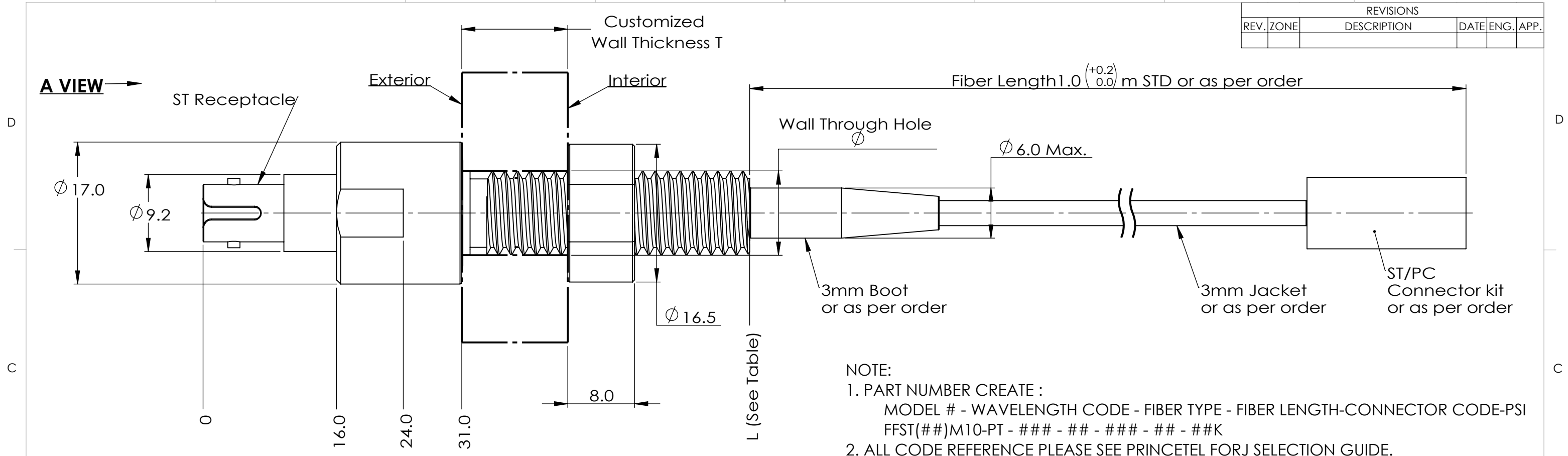
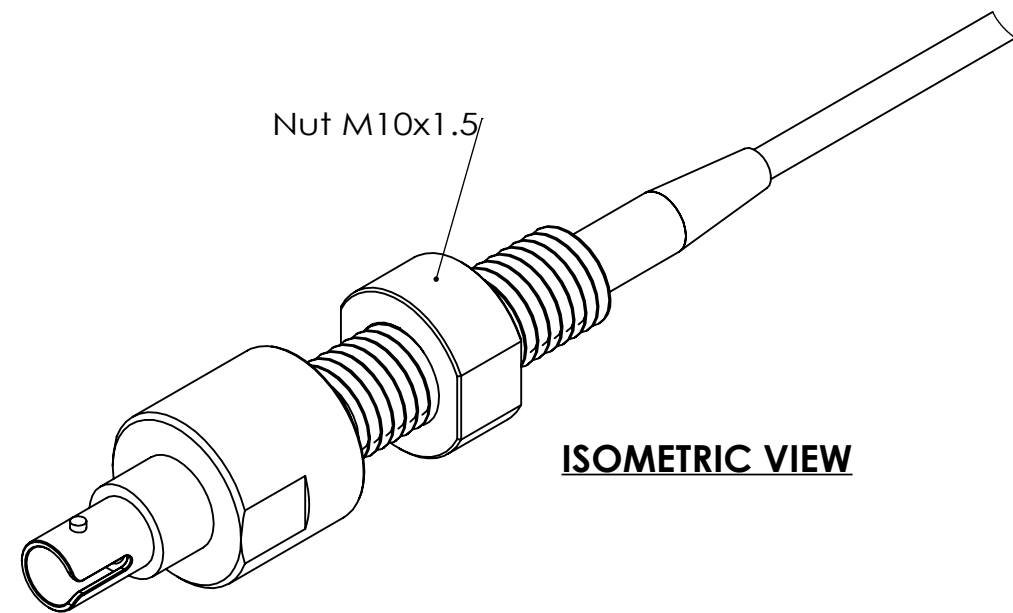
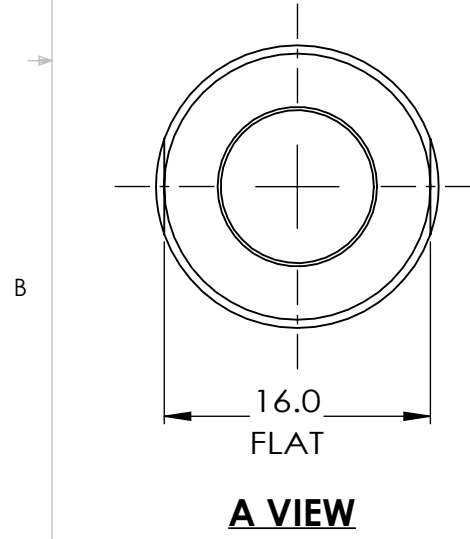


REVISIONS				
REV.	ZONE	DESCRIPTION	DATE	ENG. APP.



NOTE:
 1. PART NUMBER CREATE :
 MODEL # - WAVELENGTH CODE - FIBER TYPE - FIBER LENGTH-CONNECTOR CODE-PSI
 FFST(##)M10-PT - ### - ## - ### - ## - ##K
 2. ALL CODE REFERENCE PLEASE SEE PRINCETEL FORJ SELECTION GUIDE.



STANDARD SPECIFICATIONS	
PARAMETERS	VALUES
WAVELENGTH RANGE	650~1650 nm (DEPENDENT ON FIBER TYPE)
INSERTION LOSS	<1 DB
RETURN LOSS (SM)	>30 DB (TYPICAL: 40 DB; DEPENDENT ON FLUID TYPE)
OPTICAL POWER HANDLING	23 DBM
WORKING TEMPERATURE	-40 TO 85 C
STORAGE TEMPERATURE	-50 TO 85 C
PACKAGE STYLE	ST RECEPTACLE/PIGTAILED HYBRID
FIBER TYPES	SINGLE MODE OR MULTIMODE
JACKET TYPES	900um, 2mm, 3mm (KEVLAR/PVC)
PIGTAIL CONNECTOR TYPES	ST, FC, SC, LC (PC AND APC)
SHAFT DIAMETER	10.0 mm
TIGHTENING TORQUE	2Nm MAX.
HOUSING MATERIAL	STAINLESS STEEL 316
PRESSURE RATING	690 BAR (10K PSI)

MODEL #	T (mm)	L (mm)	∅ (mm)	REMARK
FFST12M10-PT	1~25.5	65.5	≥ ∅10.1	SHORT
FFST25M10-PT	12~37.5	77.8	≥ ∅10.1	STANDARD
FFST50M10-PT	41~63.5	103.5	≥ ∅10.1	LONG
FFST80M10-PT	72.5~95	135	≥ ∅10.1	EXTRA LONG
FFST25M10A-PT	3.5~32	77.8	≥ ∅14.8	STANDARD WITH ADAPTER

PROPRIETARY AND CONFIDENTIAL
 THE INFORMATION CONTAINED IN THIS DRAWING IS THE SOLE PROPERTY OF PRINCETEL, INC. ANY REPRODUCTION IN PART OR AS A WHOLE WITHOUT THE WRITTEN PERMISSION OF PRINCETEL, INC. IS PROHIBITED.

UNLESS OTHERWISE SPECIFIED:
 DIMENSIONS ARE IN mm
 DO NOT SCALE DRAWING

TOLERANCES:
 ANGULAR: ± 1/2°
 ONE PLACE DECIMAL ± 0.100
 TWO PLACE DECIMAL ± 0.050
 THREE PLACE DECIMAL ± 0.025

MATERIAL:

DRAWN	7/5/2023	L. X.	PRINCETEL, INC. ST FEED THROUGH M10 THREADED ROD PIGTAILED HYBRID
CHECKED	7/5/2023	B. Z.	
ENG APPR.			
MFG APPR.			
Q.A.			

COMMENTS: FIRST ANGLE PROJECTION

SIZE	DWG. NO.	REV
B	FFSTM10-PT-AD	1

PART NO. *SEE NOTE* SHEET 1 OF 1

